

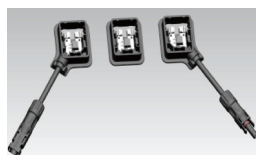
# AU-144MHD

## POWER RANGE

525W~550W

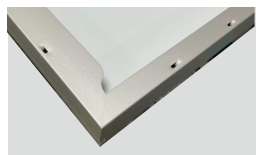
## CELL SIZE

182\*91mm



### JUNCTION BOX

Waterproof protection grade: IP68  
Safety Level: Class II  
Maximum System Voltage: 1500V  
outstanding waterproof level -  
Effectively resist harsh environments

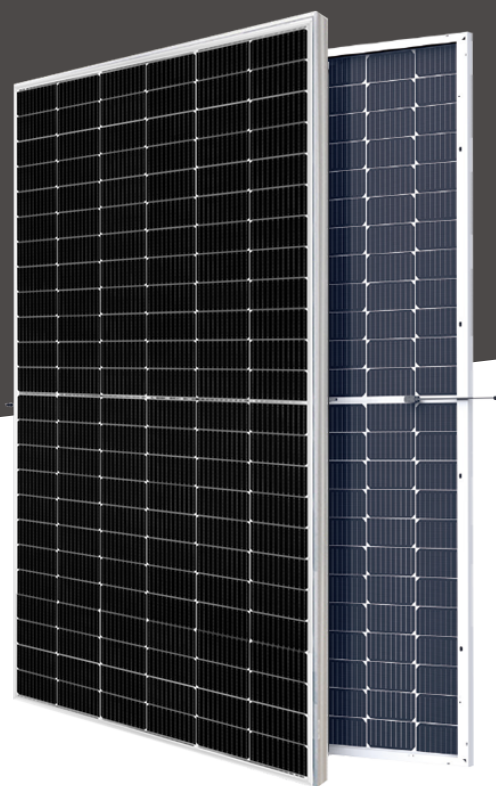


### Frame

Strong mechanical load  
resistance up to 5400Pa  
Anodic oxidation layer resistant to  
chemical corrosion available  
in silver and black



10BB

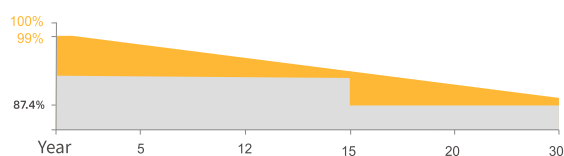


## QUALIFICATIONS AND CERTIFICATES



• IEC61215 / • IEC61730

## WARRANTY



15  
YEARS

Guarantee on product material and workmanship

30  
YEARS

Linear Power output warranty



### Higher power

Double-sided power generation can significantly improve the equivalent power generation of solar panels.  
Higher power of solar panels can effectively reduce system BOS cost.



### Higher reliability

Suitable for areas with higher temperature and higher humidity,  
resistant to salt spray ammonia gas with firing rating in A.  
Anti-PID performance improvement through battery process  
optimization and material control.



### Higher generated energy

Excellent IAM and low light performance.  
More power generation by lower temperature coefficient and lower operating temperature.



### Easy installation

The conventional frame design makes the double-glass solar panels suitable for various mounting modes.  
Easy to hold, transport and install.

## ZHEJIANG AUSTA GREEN ENERGY TECHNOLOGY CO., LTD

[www.austagroup.com](http://www.austagroup.com)

AUSTA ENERGY established in 2008, is a high-tech enterprise integrating R&D, production and sales of solar energy products. It is committed to the overall solution of distributed photovoltaic system and provides services from consulting, design, construction, financing to intelligent operation and maintenance.

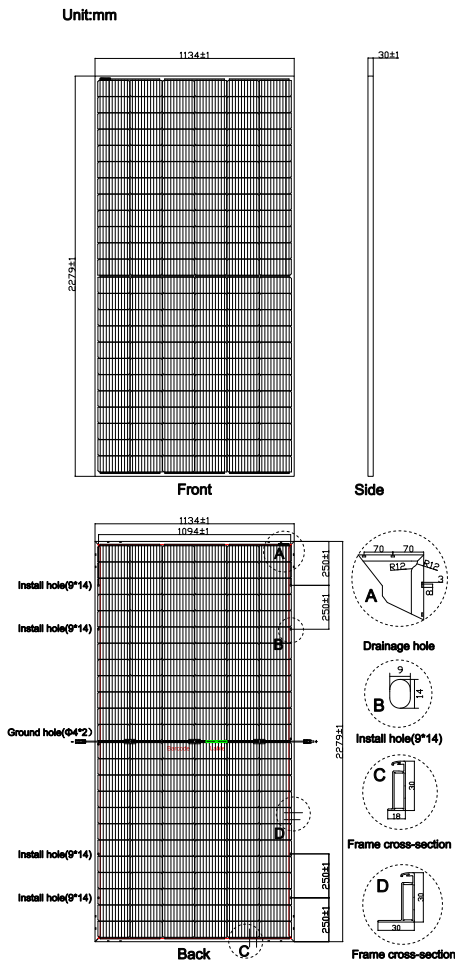
AUSTA has 3 production sites in China and branches and representative offices in more than 10 countries overseas. Products include solar cells, modules, On/Off grid solar system, solar pump and other solar related applications. Our products have passed many international certifications such as TUV, MCS, CEC, IEC, ISO, CE, CQC and so on. With excellent quality, our products are exported to more than 100 countries of the world.

Since its establishment, AUSTA has always followed the idea of "Smart energy, Lightning future". It has followed the steps of "the Belt and Road Initiative", we bring bright light to the countries and people who are short of electricity. Sharing the concept of modern civilization, and building a green home together.

# AU-144MHD

ZHEJIANG AUSTA GREEN ENERGY TECHNOLOGY CO., LTD  
www.austagroup.com

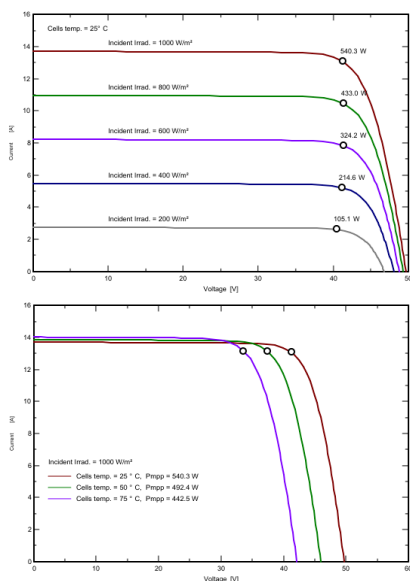
## PV DRAWINGS



## PACKING WAY

20FT container	5 Packages/185pcs
40HQ container	20 Packages/740pcs

## IV CURVE (540W)



## ELECTRICAL DATA (STC)

Model Type	AU525-36V-MHD	AU530-36V-MHD	AU540-36V-MHD	AU545-36V-MHD	AU550-36V-MHD
Peak Power(Pmax)	525.00	530.00	540.00	545.00	550.00
Maximum Power Voltage(Vmp)	41.28	41.44	41.76	41.93	42.10
Maximum Power Current(Imp)	12.72	12.79	12.93	13.00	13.06
Open Circuit Voltage(Voc)	49.10±3%	49.30±3%	49.70±3%	49.90±3%	50.10±3%
Short Circuit Current(Isc)	13.56±3%	13.65±3%	13.83±3%	13.92±3%	14.01±3%
Module Efficiency( % )	20.32	20.52	20.90	21.10	21.29

\* STC: irradiance 1000 W/m², AM 1.5, and cell temperature of 25°C

## ELECTRICAL DATA(NMOT)

Model Type	AU525-36V-MHD	AU530-36V-MHD	AU540-36V-MHD	AU545-36V-MHD	AU550-36V-MHD
Peak Power(Pmax)	390.30	394.00	401.40	405.10	408.90
Maximum Power Voltage(Vmp)	38.30	38.46	38.78	38.93	39.09
Maximum Power Current(Imp)	10.20	10.25	10.35	10.41	10.46
Open Circuit Voltage(Voc)	46.00±3%	46.18±3%	46.54±3%	46.73±3%	46.92±3%
Short Circuit Current(Isc)	10.81±3%	10.89±3%	11.05±3%	11.13±3%	11.20±3%

\* NMOT: irradiance 800 W/m², AM 1.5, ambient temperature 20°C, wind speed 1 m/s

## PARAMETER OF DOUBLE-SIDED POWER GENERATION(540W)

Pmax gain	Pmax/W	Vmpp/V	Imp/A	Voc/V	Isc/A
5%	567.00	41.76	13.58	49.70±3%	14.53±3%
15%	621.00	41.76	14.88	49.70±3%	15.92±3%
25%	675.00	41.76	16.17	49.70±3%	17.30±3%

## TEMPERATURE & MAXIMUM RATING

Maximum System Voltage (V)	1500 V
Maximum Series Fuse Rating (A)	30 A
Power Tolerance	0~+3 W
Pmax Temperature Coefficients (W/°C)	-0.350 %/°C
Voc Temperature Coefficients (V/°C)	-0.285 %/°C
Isc Temperature Coefficients (A/°C)	+0.045 %/°C
NOCT Nominal Operating Cell Remperature (°C)	45±2 °C
Operating and Storage Temperature (°C)	-40~+85 °C

## MECHANICAL CHARACTERISTICS

Cell Type	182*91 Bifacial Mono
No. of Cells	144 (12*12)
Dimensions	2279*1134*30mm
Weight	32.20kg
Front glass	2.0mm coated high-transparent tempered glass
Back glass	2.0mm high-transparent glass
Frame	Anodized Aluminium Alloy
Junction box	IP68 3diodes
Output cables	4mm² cable 35cm (Including MC4 connector)
MaxWind Load/Snow Load	2400Pa/5400Pa

Austa



We Are Seeking Agents And Partners!

ADD: Floor 1, Building 7, No. 136, Haichuan Road, Jiangbei Area, Ningbo City, Zhejiang Province, P.R. China

Tel: 86-574-87915068

Call: 86-13566302808

E-mail: sales@austagroup.com

The company reserves the right of final interpretation, August 2022 edition